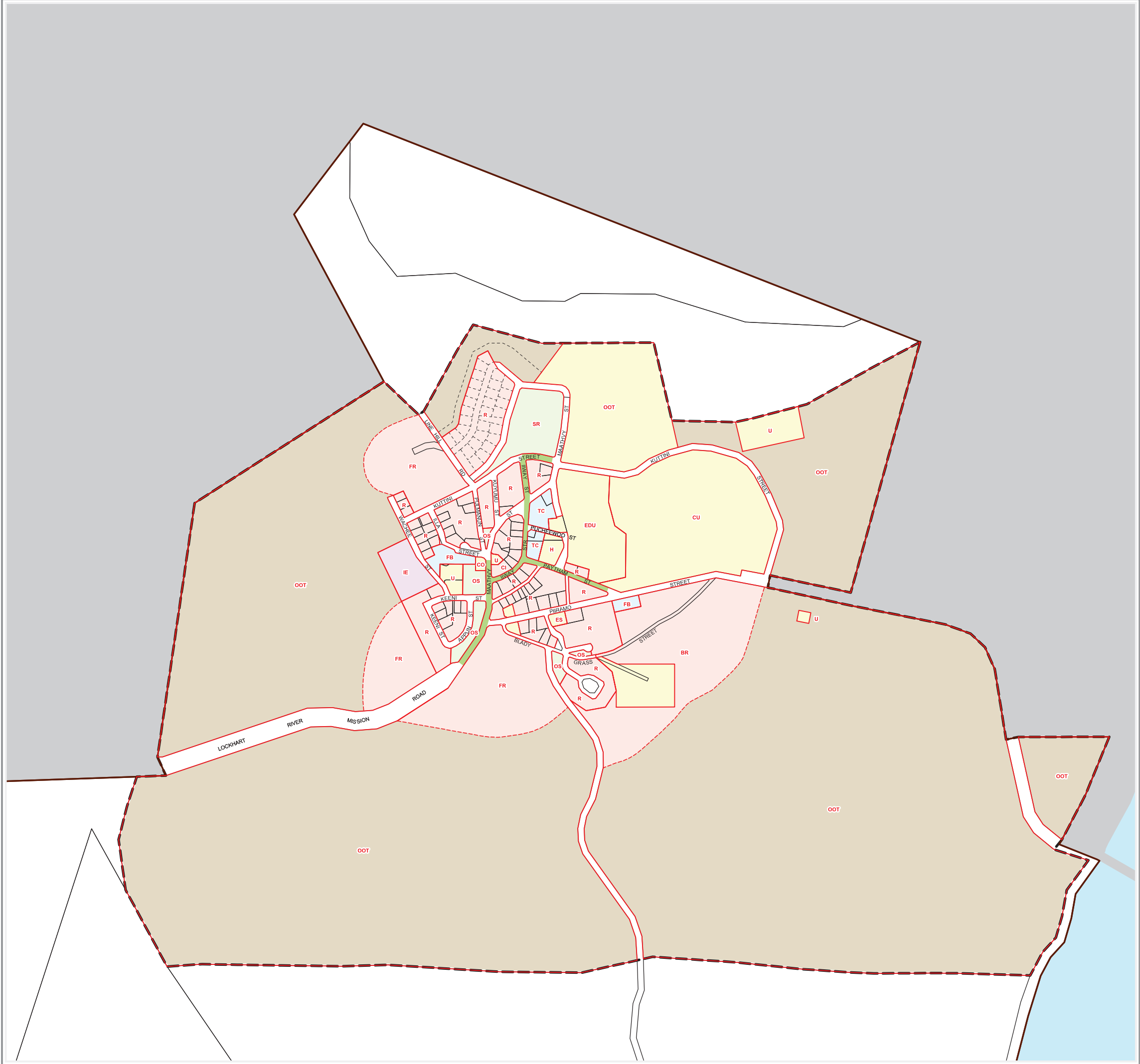


SC2.4 Local plan maps

Table SC2.4.1—Local plan map index

LPM001	Local Plan Map 1	30 November 2015
LPM001a	Local Plan Map 1a	30 November 2015



LOCKHART RIVER planning scheme

Legend

- Lockhart River Township Local Plan Boundary
- Green Streets

Precincts

- Precinct Boundary
- Indicative Precinct Boundary Subject to Further Detailed Assessment

Precinct Category

- TC Town Centre
- FB Fringe Business
- R Residential
- BR Bush Residential
- FR Future Residential
- CO Council
- CI Creative Industries
- CU Cultural
- EDU Education
- ES Emergency Services
- H Health
- U Utilities
- IE Industrial Enterprise
- OS Open Space
- SR Sport and Recreation
- OOT Out of Town

Other

- Cadastre
- Proposed Cadastre
- Lockhart River Aboriginal Shire Council Boundary
- Waterbody
- Cook Shire Council

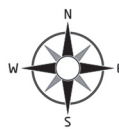
Information

Whilst every care is taken to ensure the accuracy of this product, neither the Lockhart River Aboriginal Shire Council or the State of Queensland make any representations or warranties about its accuracy, reliability, completeness or suitability for any particular purpose and disclaims all responsibility and all liability (including without limitation, liability in negligence) for all expenses, losses, damages (including indirect or consequential damage) and costs that may occur as a result of the product being inaccurate or incomplete in any way or for any reason.

CADASTRAL DATA: State of Queensland (Department of Natural Resources and Mines) 2014; Cadastral Data Fortnightly Extract Lockhart River Local Government Area; Publication date: 06/01/2014.

Crown & Council Copyright Reserved.

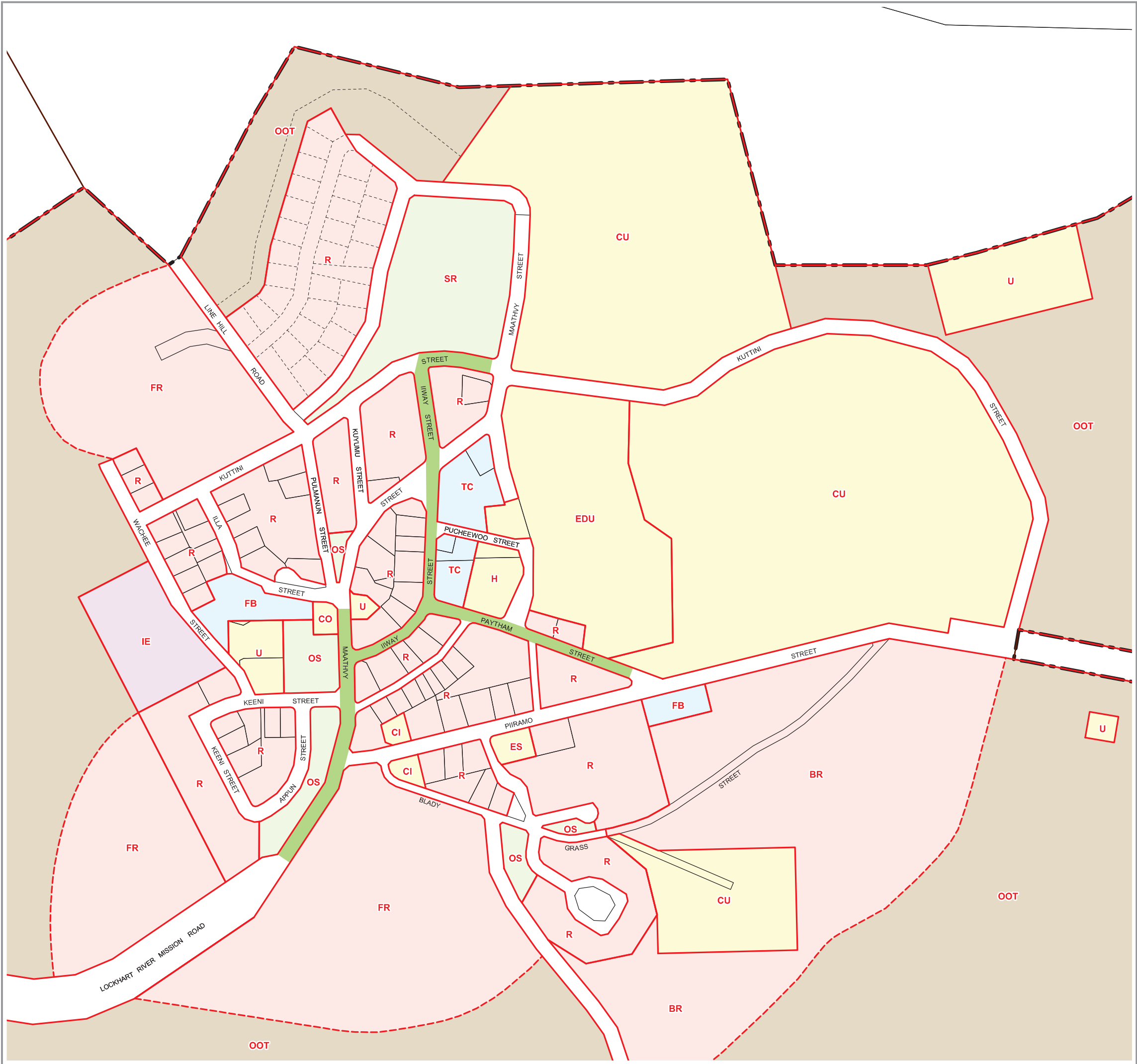
Map Index



0 120 240 360 480 600metres
1:12,000
Geocentric Datum of Australia 1994 (GDA94)

Lockhart River Township Local Plan Map

LPM-001



LOCKHART RIVER planning scheme

Legend

- Lockhart River Township Local Plan Boundary
- Green Streets

Precincts

- Precinct Boundary
- Indicative Precinct Boundary Subject to Further Detailed Assessment

Precinct Category

- TC Town Centre
- FB Fringe Business
- R Residential
- BR Bush Residential
- FR Future Residential
- CO Council
- CI Creative Industries
- CU Cultural
- EDU Education
- ES Emergency Services
- H Health
- U Utilities
- IE Industrial Enterprise
- OS Open Space
- SR Sport and Recreation
- OOT Out of Town

Other

- Cadastre
- Proposed Cadastre
- Lockhart River Aboriginal Shire Council Boundary
- Cook Shire Council

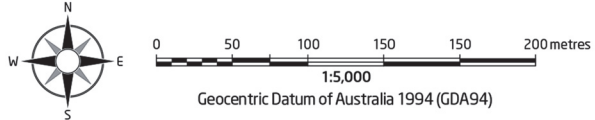
Information

Whilst every care is taken to ensure the accuracy of this product, neither the Lockhart River Aboriginal Shire Council or the State of Queensland make any representations or warranties about its accuracy, reliability, completeness or suitability for any particular purpose and disclaims all responsibility and all liability (including without limitation, liability in negligence) for all expenses, losses, damages (including indirect or consequential damage) and costs that may occur as a result of the product being inaccurate or incomplete in any way or for any reason.

CADASTRAL DATA: State of Queensland (Department of Natural Resources and Mines) 2014; Cadastral Data Fortnightly Extract Lockhart River Local Government Area; Publication date: 06/01/2014.

Crown & Council Copyright Reserved.

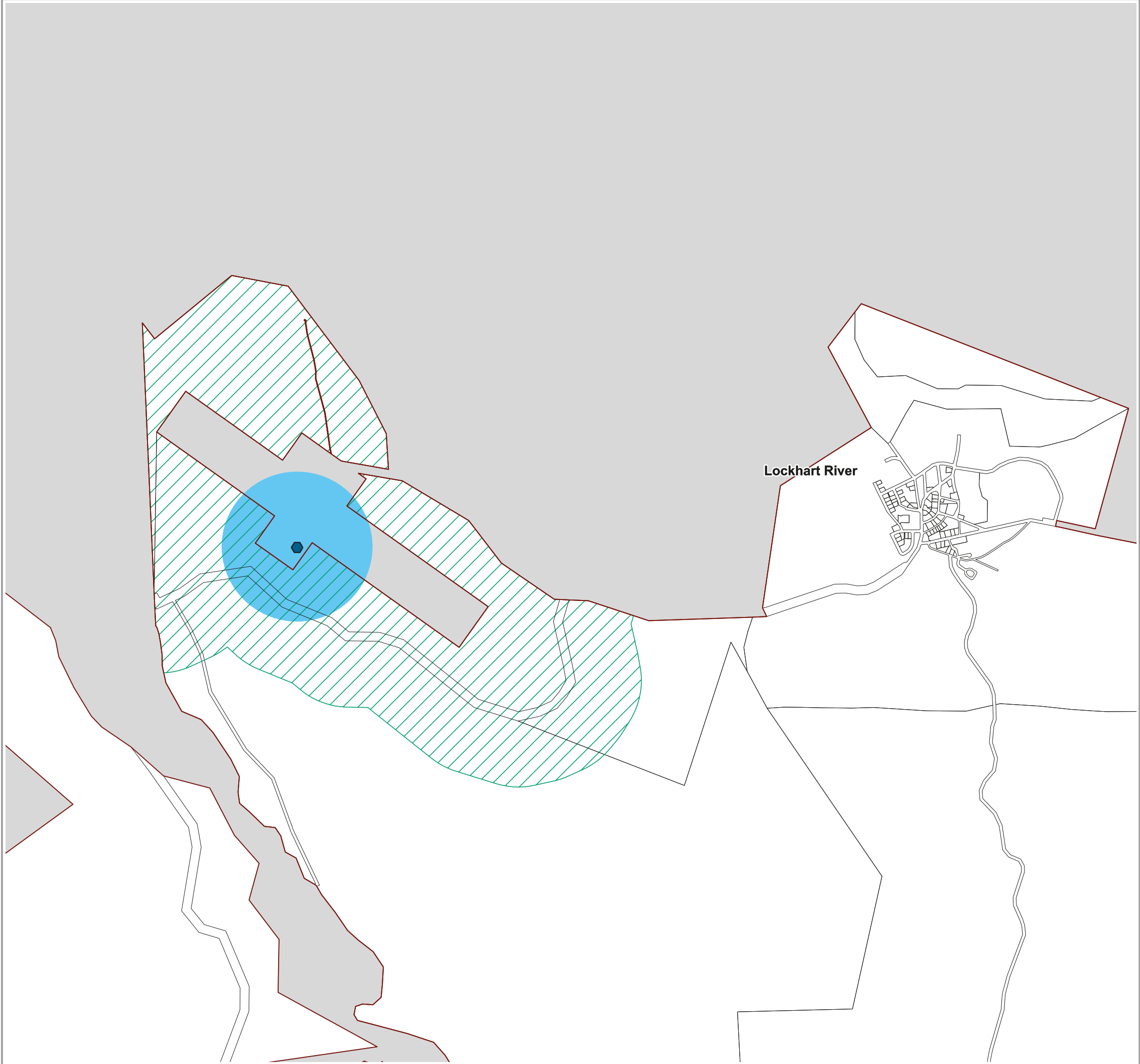
Map Index






SC2.5 Overlay maps

Table SC2.5.1—Overlay map index




OM-001	Airport Environs Overlay Map	30 November 2015
OM-002	Biodiversity Overlay – Vegetation Map	30 November 2015
OM-003	Biodiversity Overlay – Waterways Map	30 November 2015
OM-004	Biodiversity Overlay – Wetlands Map	30 November 2015
OM-005	Bushfire Hazard Overlay Map	30 November 2015
OM-005a	Bushfire Hazard Overlay Map	30 November 2015
OM-006	Coastal Hazard Overlay Map	30 November 2015
OM-007	Flood Hazard Overlay Map	30 November 2015



Legend

-  Lockhart Non-Directional Beacon
-  Lockhart Non-Directional Beacon Buffer (500 metres)
-  Bird and Bat Attractant Buffer (500 metres)

Other

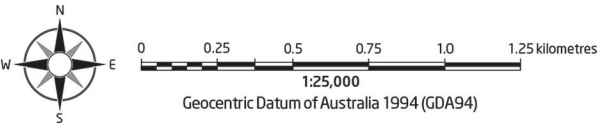
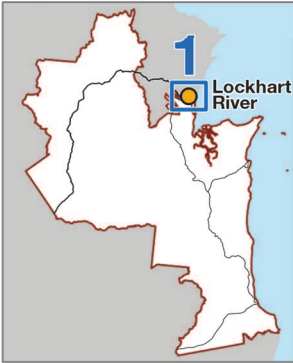
-  Cadastre
-  Lockhart River Aboriginal Shire Council Boundary
-  Cook Shire Council

Information

Whilst every care is taken to ensure the accuracy of this product, neither the Lockhart River Aboriginal Shire Council or the State of Queensland make any representations or warranties about its accuracy, reliability, completeness or suitability for any particular purpose and disclaims all responsibility and all liability (including without limitation, liability in negligence) for all expenses, losses, damages (including indirect or consequential damage) and costs that may occur as a result of the product being inaccurate or incomplete in any way or for any reason.

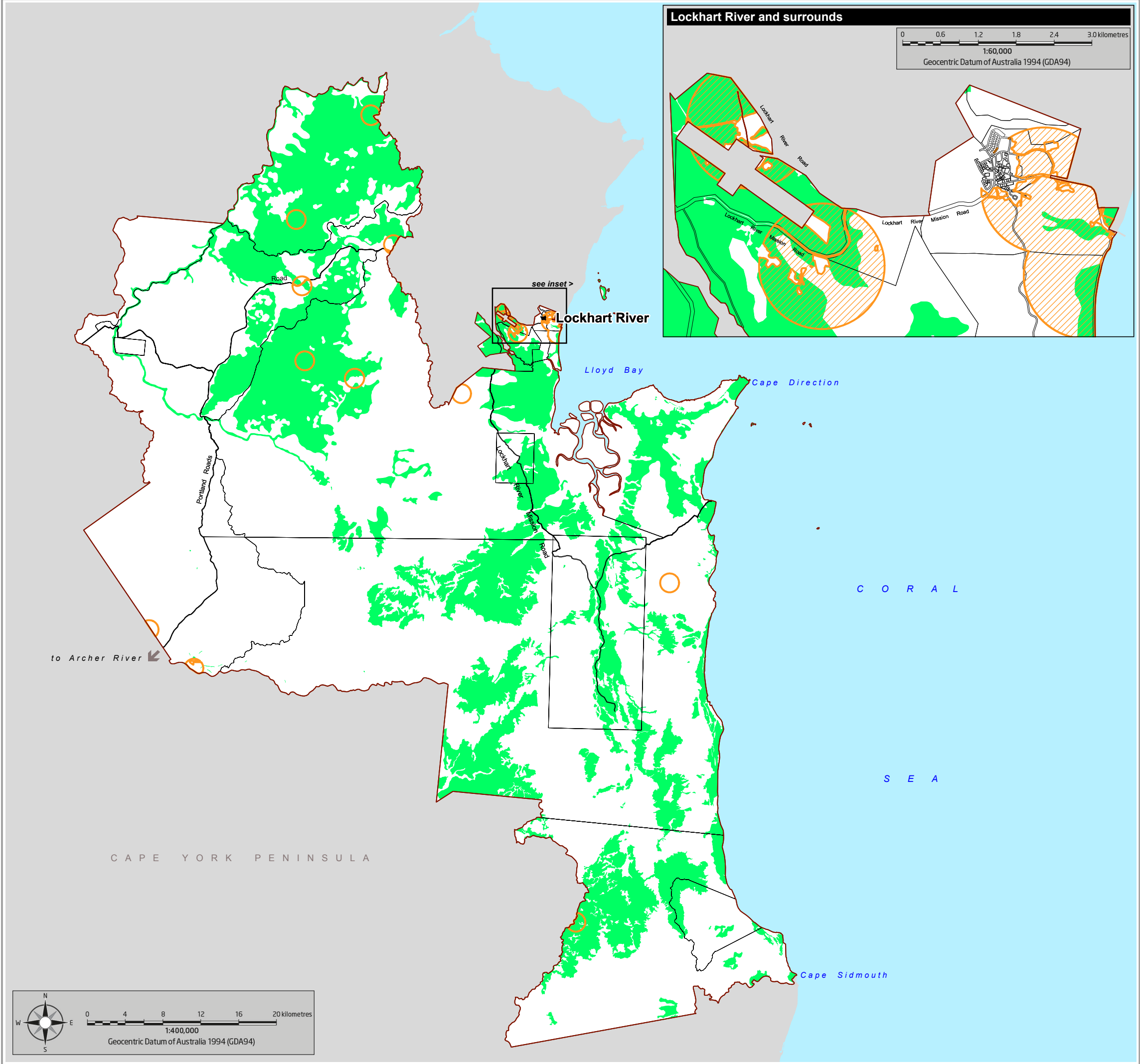
CADASTRAL DATA: State of Queensland (Department of Natural Resources and Mines) 2014; Cadastral Data Fortnightly Extract Lockhart River Local Government Area; Publication date: 06/01/2014.
Crown & Council Copyright Reserved.

Map Index



Airport Environs Overlay

OM-001



Legend

- Regulated Vegetation
- Wildlife Habitat - main map
- Wildlife Habitat - inset map

Other

- Cadastral
- Lockhart River Aboriginal Shire Council Boundary
- Waterbody
- Cook Shire Council

Information

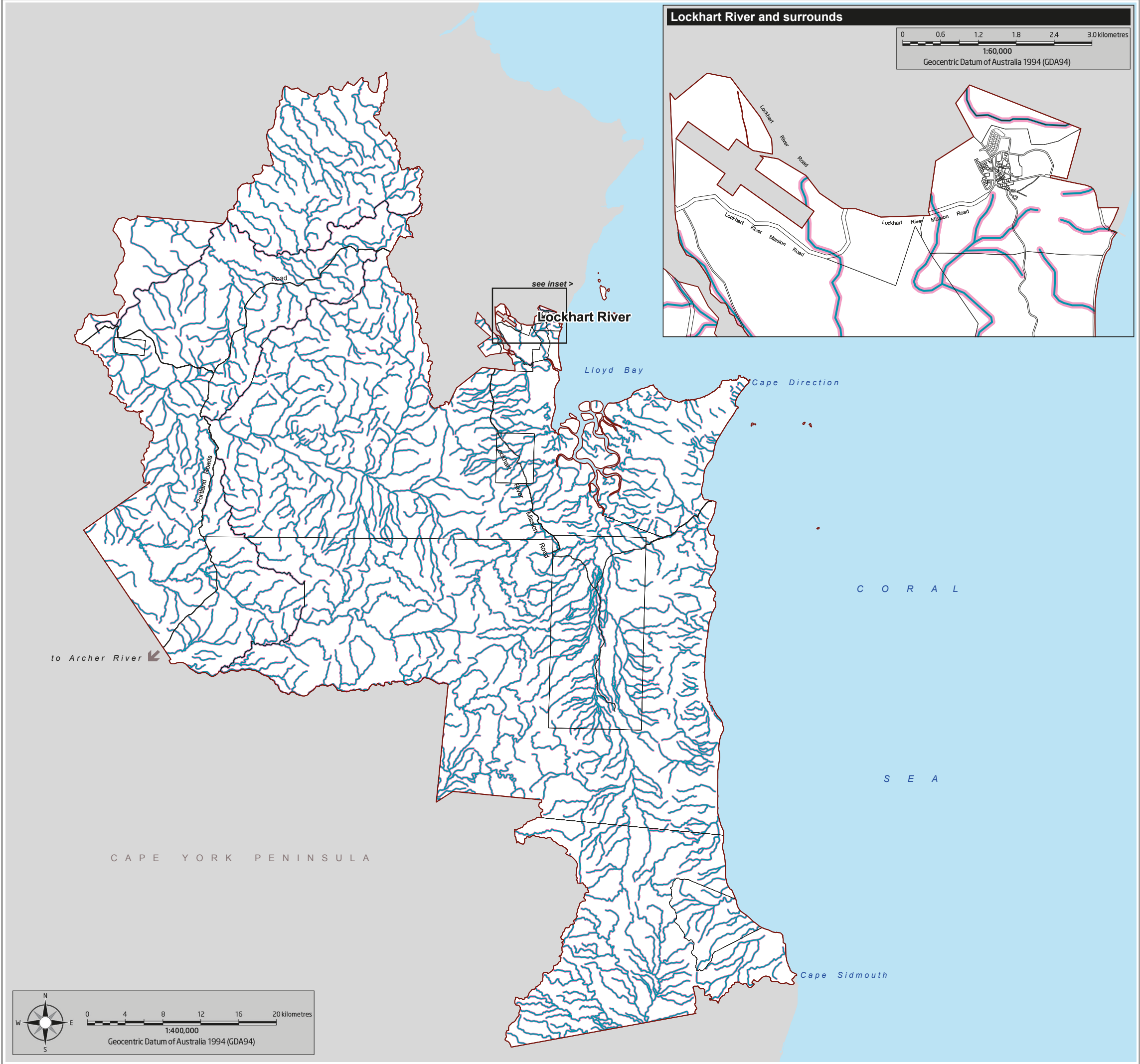
Whilst every care is taken to ensure the accuracy of this product, neither the Lockhart River Aboriginal Shire Council or the State of Queensland make any representations or warranties about its accuracy, reliability, completeness or suitability for any particular purpose and disclaims all responsibility and all liability (including without limitation, liability in negligence) for all expenses, losses, damages (including indirect or consequential damage) and costs that may occur as a result of the product being inaccurate or incomplete in any way or for any reason.

CADASTRAL DATA: State of Queensland (Department of Natural Resources and Mines) 2014; Cadastral Data Fortnightly Extract Lockhart River Local Government Area; Publication date: 06/01/2014.

VEGETATION DATA: State of Queensland (Department of Environment and Heritage Protection) 2014; Mapping for Matters of State Environmental Significance version 3 in Queensland under the new State Planning Policy; Publication date: 14/02/2014. Crown & Council Copyright Reserved.

Map Index





Legend

- Waterway
- Waterway Buffer (50 metres)

Other

- Cadastre
- Lockhart River Aboriginal Shire Council Boundary
- Waterbody
- Cook Shire Council

Information

Whilst every care is taken to ensure the accuracy of this product, neither the Lockhart River Aboriginal Shire Council or the State of Queensland make any representations or warranties about its accuracy, reliability, completeness or suitability for any particular purpose and disclaims all responsibility and all liability (including without limitation, liability in negligence) for all expenses, losses, damages (including indirect or consequential damage) and costs that may occur as a result of the product being inaccurate or incomplete in any way or for any reason.

CADASTRAL DATA: State of Queensland (Department of Natural Resources and Mines) 2014; Cadastral Data Fortnightly Extract Lockhart River Local Government Area; Publication date: 06/01/2014.

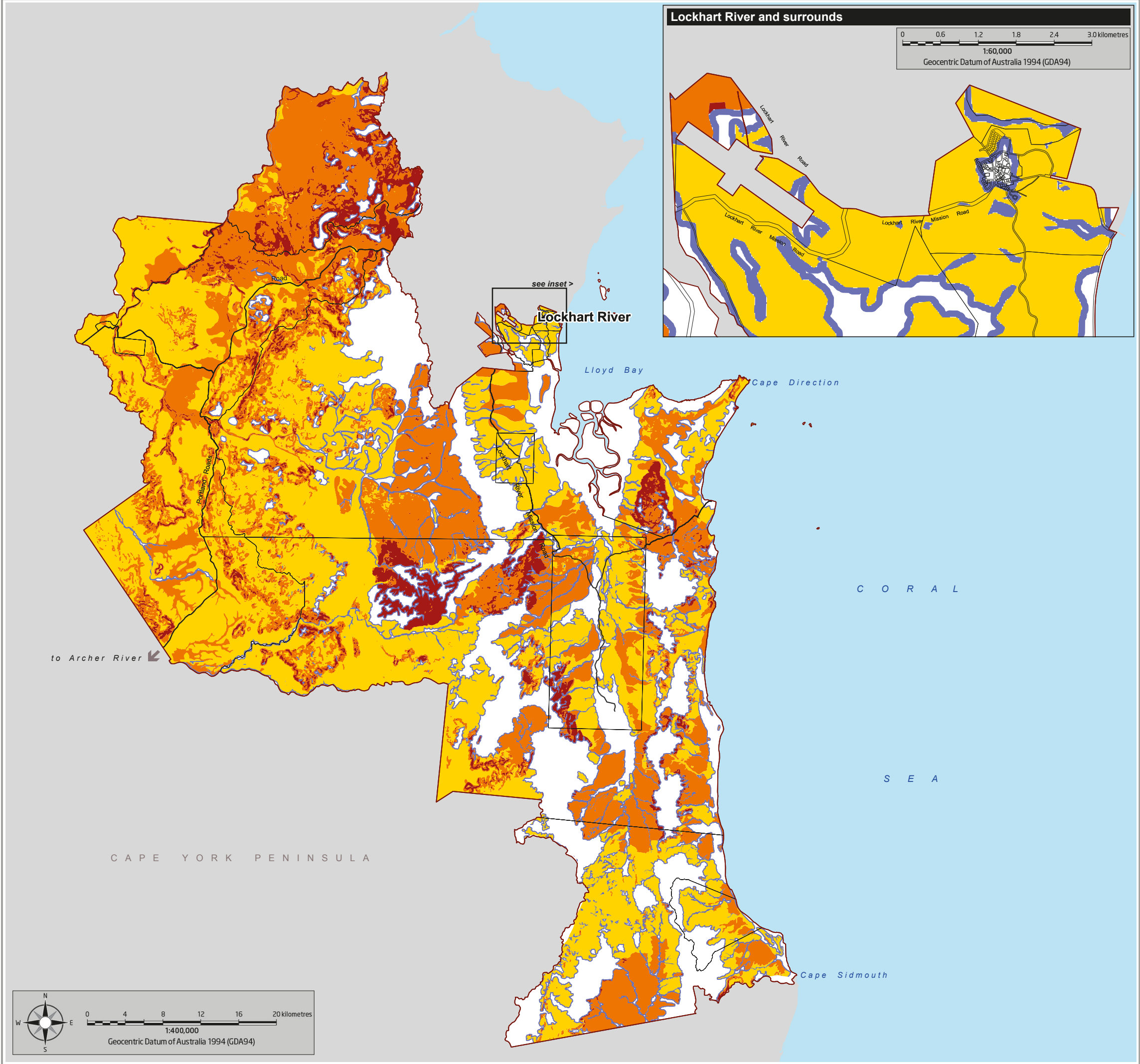
WATERWAY CORRIDOR DATA: State of Queensland (Department of Environment and Heritage Protection) 2014; Matters of State environmental significance drainage lines -version3- Queensland; Publication date: 11/12/2013.

Crown & Council Copyright Reserved.

Map Index



Biodiversity Overlay- Waterways



Legend

- Very High (potential intensity) Bushfire Hazard Area
- High (potential intensity) Bushfire Hazard Area
- Medium (potential intensity) Bushfire Hazard Area
- Potential Bushfire Impact Buffer

Other

- Cadastre
- Lockhart River Aboriginal Shire Council Boundary
- Waterbody
- Cook Shire Council

Information

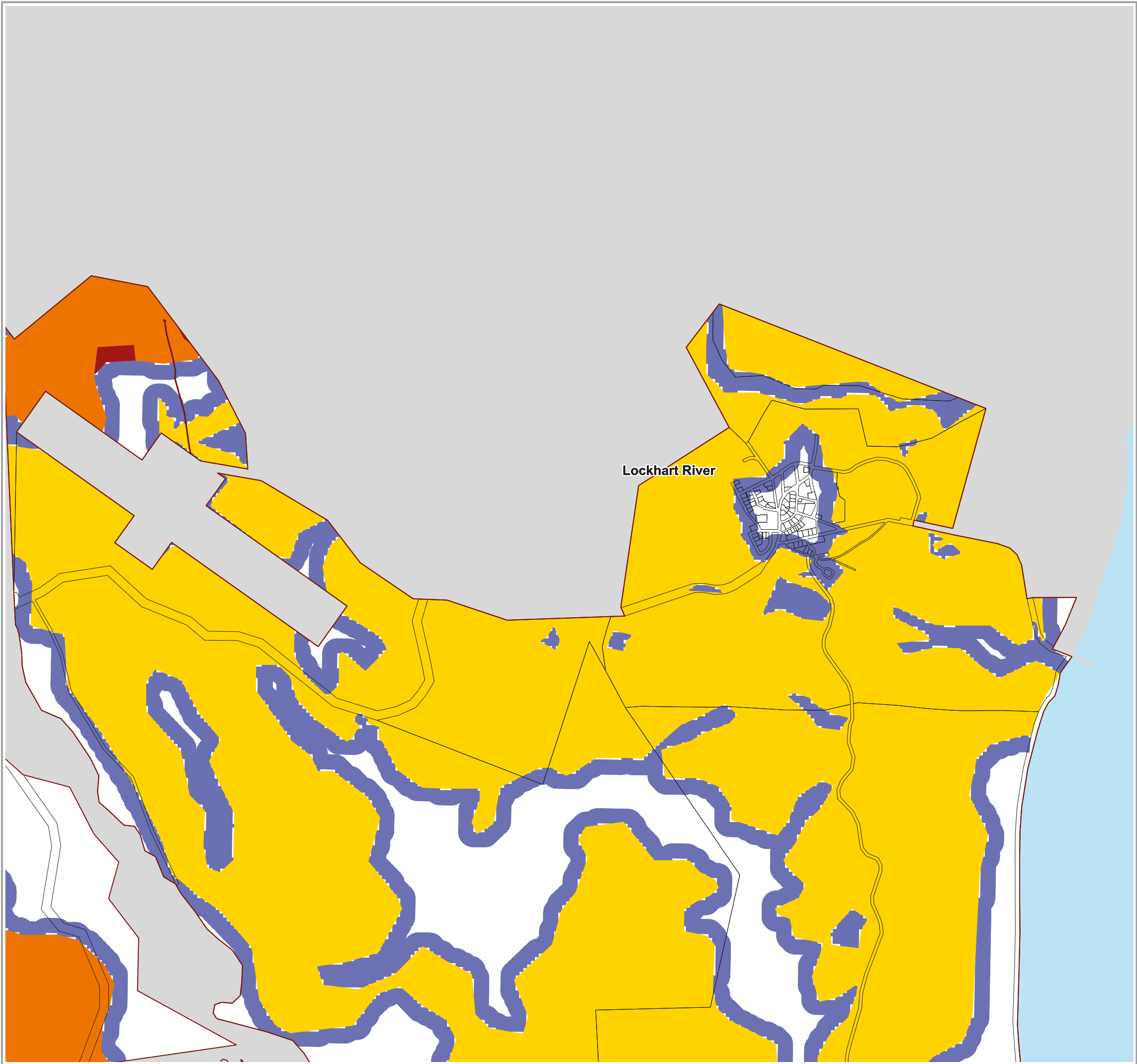
Whilst every care is taken to ensure the accuracy of this product, neither the Lockhart River Aboriginal Shire Council or the State of Queensland make any representations or warranties about its accuracy, reliability, completeness or suitability for any particular purpose and disclaims all responsibility and all liability (including without limitation, liability in negligence) for all expenses, losses, damages (including indirect or consequential damage) and costs that may occur as a result of the product being inaccurate or incomplete in any way or for any reason.

CADASTRAL DATA: State of Queensland (Department of Natural Resources and Mines) 2014;
Cadastral Data Fortnightly Extract Lockhart River Local Government Area;
Publication date: 06/01/2014.

BUSHFIRE DATA: State of Queensland (Public Safety Business Agency) 2014;
Bushfire Hazard Area - Bushfire Prone Area - Queensland: Publication date: 05/02/14.
Crown & Council Copyright Reserved.

Map Index





Legend

- Very High (potential intensity) Bushfire Hazard Area
- High (potential intensity) Bushfire Hazard Area
- Medium(potential intensity) Bushfire Hazard Area
- Potential Bushfire Impact Buffer

Other

- Cadastre
- Lockhart River Aboriginal Shire Council Boundary
- Waterbody
- Cook Shire Council

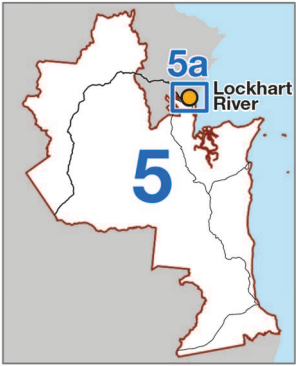
Information

Whilst every care is taken to ensure the accuracy of this product, neither the Lockhart River Aboriginal Shire Council or the State of Queensland make any representations or warranties about its accuracy, reliability, completeness or suitability for any particular purpose and disclaims all responsibility and all liability (including without limitation, liability in negligence) for all expenses, losses, damages (including indirect or consequential damage) and costs that may occur as a result of the product being inaccurate or incomplete in any way or for any reason.

CADASTRAL DATA: State of Queensland (Department of Natural Resources and Mines) 2014;
Cadastral Data Fortnightly Extract Lockhart River Local Government Area;
Publication date: 06/01/2014.

BUSHFIRE DATA: State of Queensland (Public Safety Business Agency) 2014;
Bushfire Hazard Area - Bushfire Prone Area - Queensland: Publication date: 05/02/14.
Crown & Council Copyright Reserved.

Map Index



0 0.25 0.5 0.75 1.0 1.25 kilometres
1:25,000
Geocentric Datum of Australia 1994 (GDA94)

Bushfire Hazard Overlay

OM-005a